

2020

ANNUAL REPORT



LONG WAY HOME, INC.

BUILDING SUSTAINABLE SCHOOLS

Table of Contents

16



Impact Stories: Green Building

22



Impact Stories: LWH Partners

4



Message from Board Member

8



2020 & LWH

27



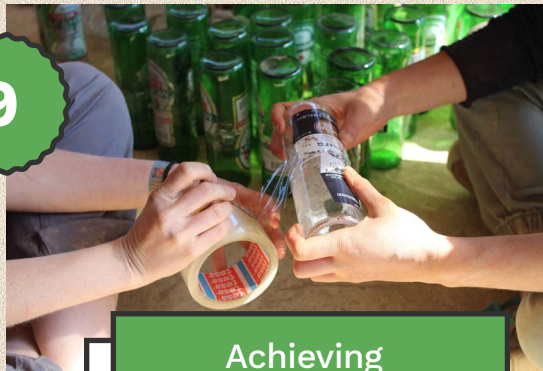
Highlighting our Supporters

32



Lessons from 2020

9



Achieving the Mission

12



Impact Stories: Hero School

34



Looking forward to 2021

35



Financial Transparency

1.

Message from Board Member

Dear Long Way Home (LWH) Supporters,

2020 was not just another year. The pandemic impacted each of the facets of LWH's programming.

It changed the ways in which our teachers were able to teach their students. With the advent of the internet, teachers in the United States were able to teach remotely. However, in Guatemala, the teachers at LWH's Hero School went door-to-door in order to hand out assignments, collect, and then grade the assignments. Teaching amidst a pandemic, in a small town, and with a student population largely lacking remote learning necessities, brought a unique set of challenges, yet our teachers rose to meet these challenges.

COVID also impacted LWH's construction arm. The construction team shifted their focus to campus restoration and, in the true spirit of green building, we were able to reduce our construction budget by relying on projects that repurposed what was already on campus, rather than buying new materials.

As for the Green Building Academy and the Volunteer Program, we had to stop those abruptly. Fortunately, we had an amazing team that ensured all volunteers

made it home safely in mid-March. And even after our foreign staff relocated to their home countries, the nonprofit administration work continued on without a hiccup and with a new level of passion and energy.

Our Executive Director, Matt, received the prestigious Sargent Shriver Award for former Peace Corps volunteers. We also received the PPP and EIDL loan from the United States Small Business Administration. While these awards helped us stay afloat last year and into this year, the LWH Board of Directors is aware that the majority of the money comes from a loan that will have to be repaid. The Board has started an Ally Program to help make up this difference, although this will take a few years to reach its full momentum.

Our team has always attracted brilliant and creative people to find ways to carry the organization forward. 2020 came with challenges that abruptly changed the way the world does business. I am confident that the LWH tribe will continue to innovate through a changing world... alas, it is our organizational vision to do so.

Thank you for getting us this far, and I look forward to seeing how LWH adapts to and impacts the inevitably changing future.

Alexander Sinclair, MPA

President of the Board of Directors
Long Way Home



“Knowledge is humanistic in quality not because it is about human products in the past, but because of what it does in liberating human intelligence and human sympathy. Any subject matter which accomplishes this result is humane, and any subject matter which does not accomplish it is not even educational.”

-John Dewey

“Democracy and Education”, Pg 220.



Señora Glendy and her students (6th grade).

2.

2020 & Long Way Home

A moment of silence. Hard Stop. Pause.

In 2020, globally close to 2 million people lost their lives. Out of 195 countries, only 11 reported no cases. **To every person affected by this tragedy, LWH mourns your loss.** Mourning takes many forms. Philosopher George Henry Lewes said, *“the only cure for grief is action”*, and in March 2020, the LWH team, like so many others around the world, was catapulted into action. And true to form, our team administratively, programmatically, and inspirationally rose to the occasion, as is evident in the pages of the 2020 Annual Report.



Matthew Paneitz

Executive Director
Long Way Home

3.

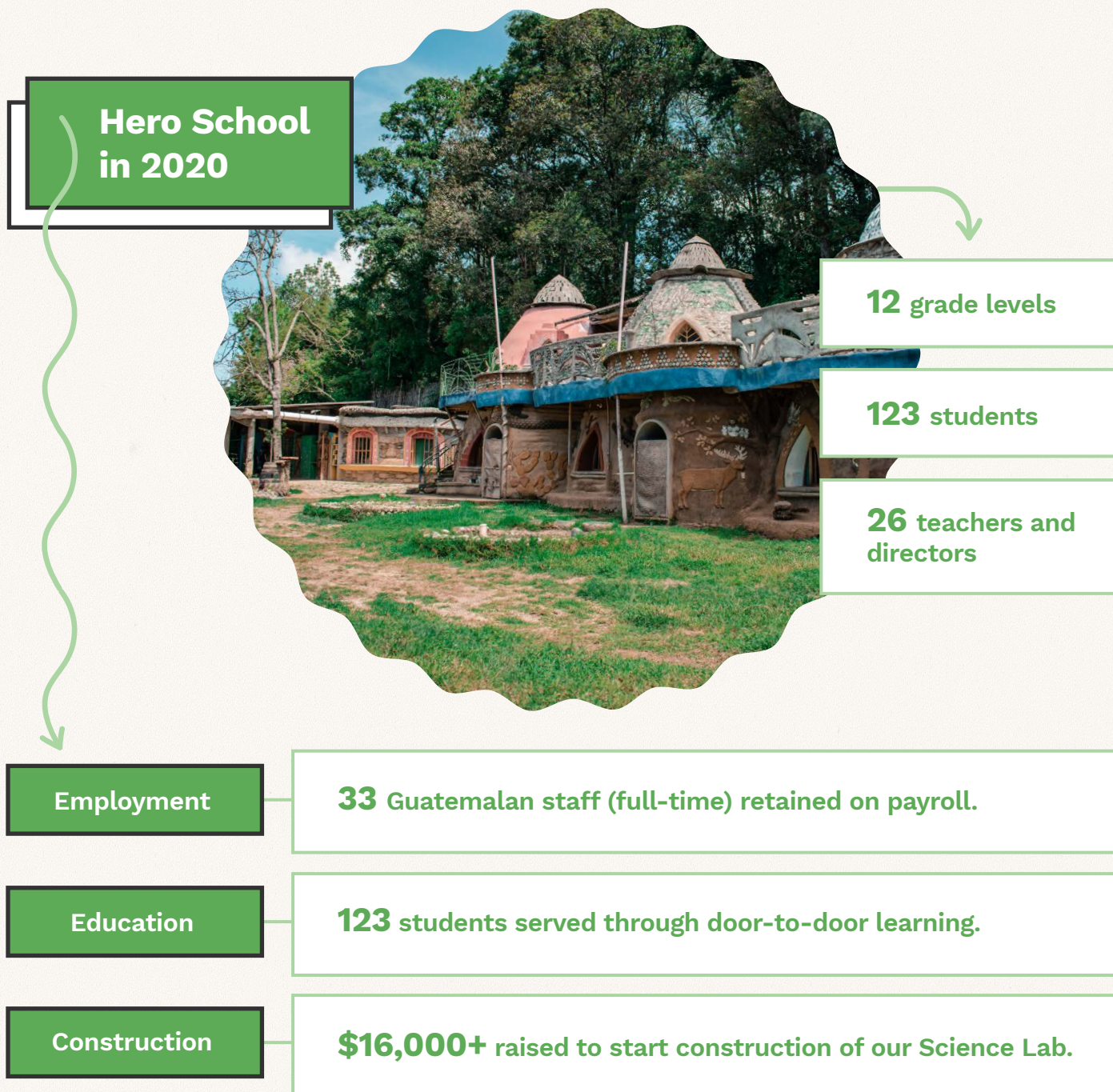
Achieving the LWH mission

Long Way Home views its impact in terms of a **Democratic Education Ecosystem**, connecting green construction, formal education, equitable international volunteerism, and active participation in addressing 21st-century challenges.

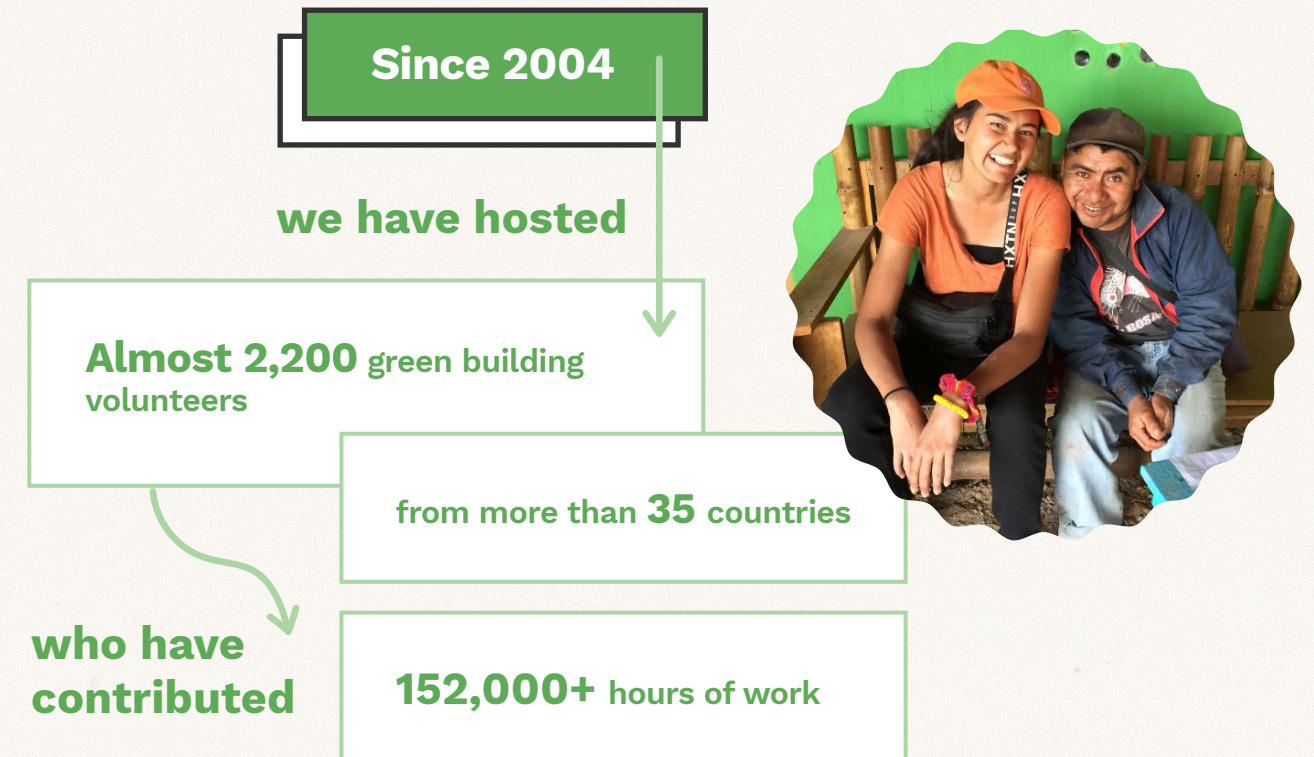


3.1 Participants of Our Ecosystem

Hero School students are engaging with our curriculum through project-based learning and becoming leaders in their own communities. Even in the midst of the pandemic, our mission continues to drive our actions:



Individual volunteers and volunteer service group participants are encouraged to become more actively engaged learners and citizens while learning about our unique construction process and approach to education.



The Green Building Academy (GBA) is a month-long program for participants around the world to learn our green building and democratic education techniques.

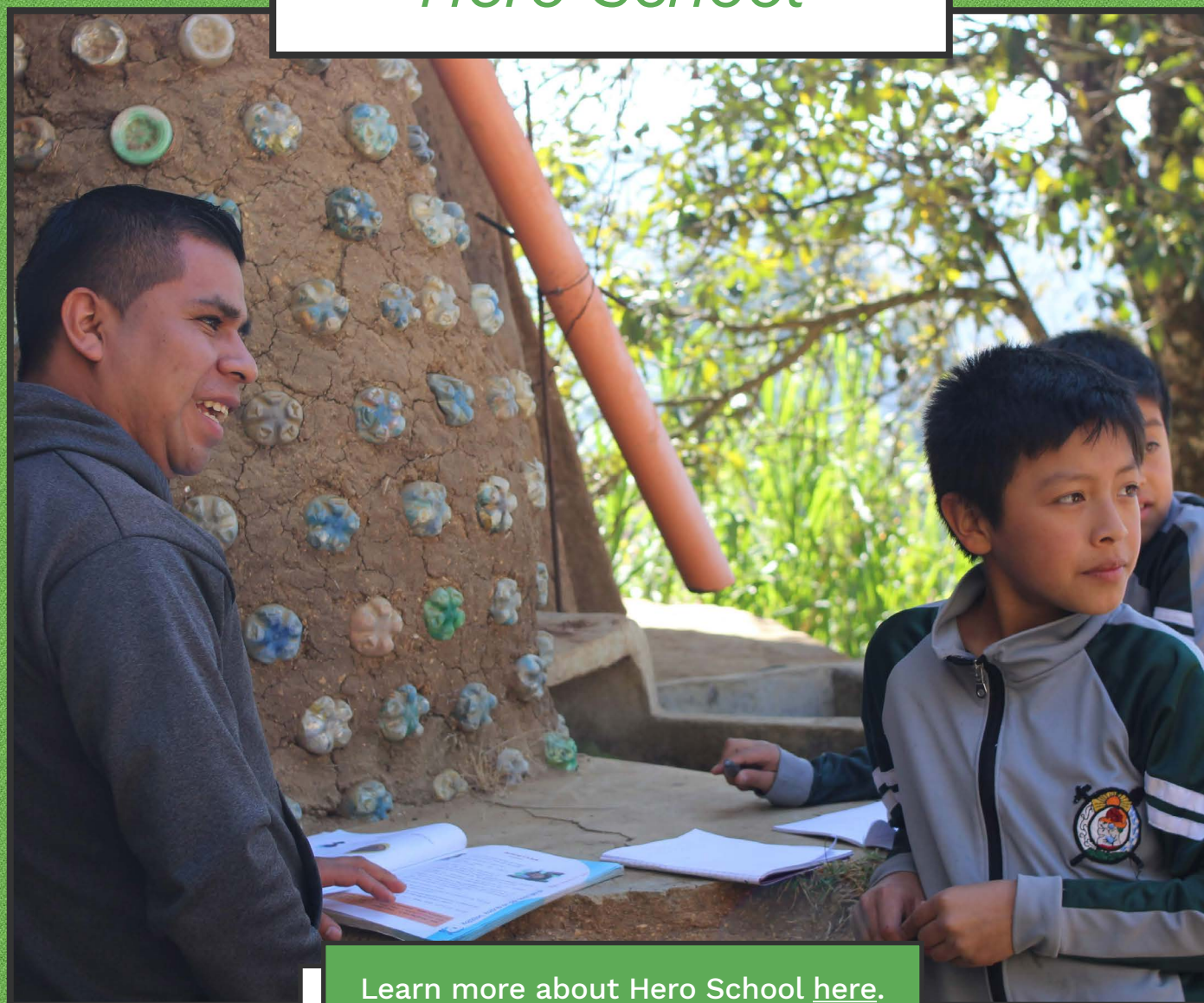


A total of 31 students

since the launch of the Academy in July, 2018

4.

Impact Stories: *Hero School*



Learn more about Hero School [here](#).

6.1 Hero School teachers make masks for Xiquin

Throughout 2020, the local LWH staff continually showed us all what solidarity looks like, as well as the true meaning of community. **In June, COVID-19 cases in Guatemala began to increase rapidly.** As with any crisis, government assistance was extremely limited and the most vulnerable communities were being left behind. In times of fear and uncertainty, and without hesitation, our teachers took on the challenge of educating their community in hopes of preventing the further spread of the virus. They used part of their working day to make face masks, which were later distributed to Hero School families and residents of a neighboring village. These masks were accompanied by instructions on how to use and disinfect correctly, both in Spanish and in Kaqchikel (the local indigenous language). **A total of 2,406 masks were made**, of which 2,161 were delivered as follows:



835 masks

to 85 families of students, 24 families of teachers, and 7 families of operational personnel (builders, janitor, gardener).

1,248 masks

benefitted the community of **Xiquin Sanahí**, where most of our Hero School student projects are carried out.

100 masks

benefitted the **Asociación Sonrisas Angelicales**, which serves children with special needs.

The remaining 245 masks will be distributed among staff and students during the reactivation of face-to-face classes (mid-2021). We are honored to keep providing employment and support to such caring and committed individuals, such as our teachers. It is true what they say: “once a teacher, always a teacher..”

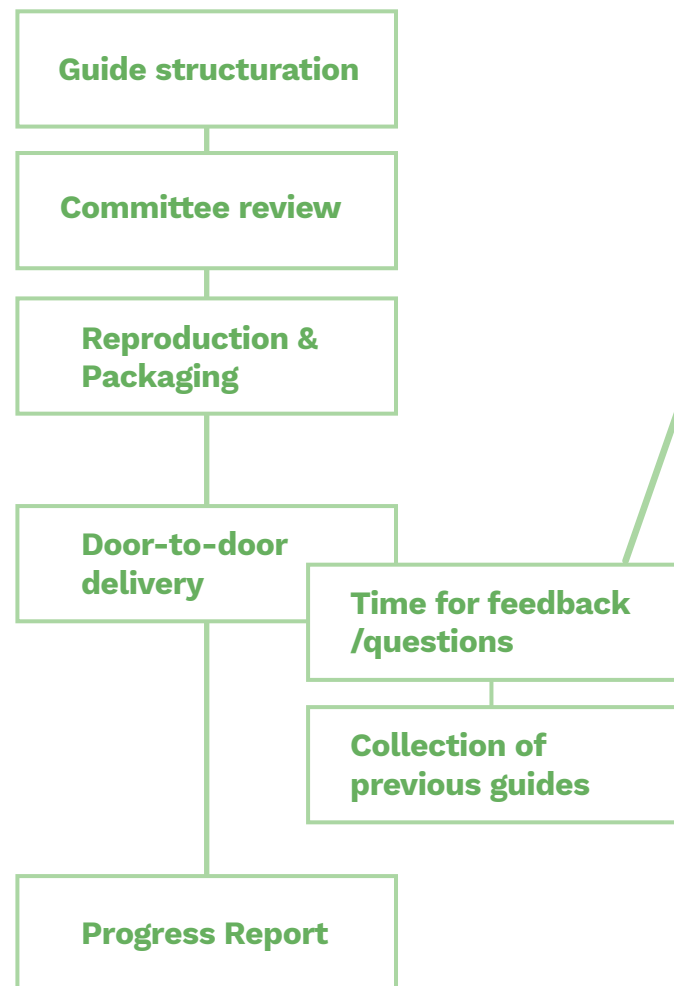
6.2 Teachers go door to door to deliver lessons when students do not have access to technology

After a curfew was ordered in Guatemala, all work and school activities were suspended. This forced schools across the country to seek viable strategies for distance education. In consensus with all the teachers, Hero School decided to work with self-study guides, which were delivered to the students' homes by the teachers every 15 days. This is how the system was carried out:

Hero School's 2020 Education System

- For a week, teachers would structure their self-study guides.
- These guides were then sent via email to the review committee **to verify that they did not require the student to leave their home**, either to buy school supplies or to access the internet (it was necessary to adapt the system to the living conditions of the students).
- Once reviewed, the guides were reproduced and packaged by the school's Secretary, who would have them ready by the delivery date.
- **Each teacher was in charge of delivering the guides, from house to house, to their respective students.** At each visit, the teachers would take some time to receive feedback or answer questions from the students, and they would also collect the previous guides.

During this process, each teacher kept a record of the progress and achievements of their students and made monthly written reports to the School Director.



Hero School used this strategy because **most students do not have internet service at home, a computer, or a smartphone.** All these tools represented an additional expense for families that was, and still is, impossible to cover due to the unemployment the COVID-19 pandemic generated. However, our teachers understood that learning must continue, and so they rallied together to assess the resources available (both human and material) and craft a solution. **This is the true Hero School spirit: an innovative and democratic collaboration that serves the common good.**

6.3 All Guatemalan staff members were retained in this year of crisis

Guatemala is a country that, even in normal years, struggles with high rates of unemployment and underemployment. **The COVID-19 pandemic turned this struggle into a crisis.** However, through careful organizational planning, incredible donor generosity, and a little bit of luck, LWH was able to retain all 33 Guatemalan staff on regular payroll for the entirety of 2020. The value of economic security in a time of so much uncertainty is something that LWH is incredibly proud to be able to deliver to our colleagues.

5.

Impact Stories: *Green Building*



[Sign up for our Volunteer Program.](#)

7.1 Volunteer Groups and Individuals

2020 was slated to be an amazing year for our Volunteer Program. For service groups in January and February, we welcomed back our wonderful partners in service learning from the **Temple Beth at Marblehead Congregation** and a **youth group led by Reverend Dr. Wendy V. Courtier**. Also in February, our wonderful supporters at **Denies Chiropractic** brought down a group of professional chiropractors to conduct treatment for community members. Then in March, **Michigan Technical University** joined us again to apply their engineering knowledge during the start of the Green Building Academy. **Carpe Mundi Gap Year** also joined us in March for a two-week immersion into green-building and intercultural exchange that was unfortunately cut short due to the pandemic.



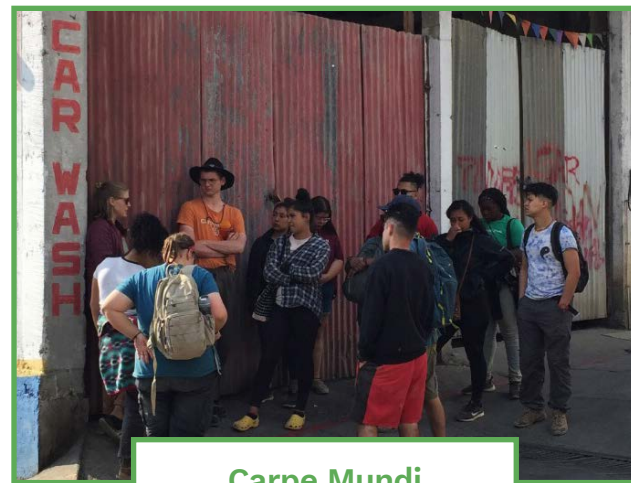
Dr. Wendy's Group



Michigan Tech

Before we paused our Volunteer Program for the Academy, the program was humming with energy! **22 individuals joined us in January and February**. We would like to give a shout out to a few long-term interns and their work. **Mark**, who stayed with us for three months (as a start to his gap year adventure), was a Green Building Volunteer with unwavering enthusiasm. **Martina** joined us as an incredibly helpful Volunteer Coordinator Assistant through the Co-Op program at Northeastern University. **Hayden** joined us through the Carpe Diem Gap Year

program as a Green Building Intern and assisted with our building projects. **Noah**, a former Non-profit Administration Intern, visited us again and hosted a video tour of our new volunteer house. **Bailey**, a graduate student at the University of Queensland in Australia, came to LWH to conduct an energy accessibility study that proved to be relevant not only to his degree completion, but also to LWH's understanding of infrastructure and access in Comalapa.



Carpe Mundi



Noah



Martina

Mark

Hayden

We are thrilled to be reopening our Volunteer Program in August 2021, following the re-launch of the Green Building Academy in July. [Sign up here to volunteer with LWH](#) and celebrate with us as we re-energize after a very tough year.

7.2 Green Building Academy (GBA), March 2020

Our fourth Green Building Academy started off with an amazing rush of energy and lots of enthusiasm. **Seven students originating from the U.S., Denmark, and France dove into the GBA curriculum.** Two service groups - Michigan Technical University and Carpe Mundi - were also on site for the start of the Academy. Unfortunately, we had to close down all programs midway through the GBA to ensure volunteers got safely on a plane home before the rapid COVID-19 shutdowns. However, before that, we were able to tackle a large portion of tire wall work for this fourth Academy house, which is definitely the most physically demanding stage of our building process.

In our July 2021 Academy, we will adapt the curriculum to focus on completing the work started in 2020. There is still some tire work to complete, but also lots of learning about and work to do on roof structures, solar power installment, and finishes (plasters, doors, windows, etc.). We'll also carry out the site assessment for the next building project.

[Register to attend the July Academy!](#)



“It is our collective and individual responsibility to preserve and tend to the world in which we all live.”

-Dalai Lama



LWH staff and Academy students installing solar panels at the new Volunteer House. March, 2020.

6.

Impact Stories: *LWH Partners*



Become an Ally to our Hero School.

8.1 Eco-Education Conference - Antigua Green School

In February 2020, LWH was invited to present at the Ecological Education Conference for progressive educators from Central America, hosted by the Antigua Green School. Most of the audience had heard of green building but had not seen any direct examples, let alone examples of green building as the vehicle for democratic education. As expected, our tire retaining walls were a marvel and the glass bottles skylights in our classroom domes and vaults a hit. Our campus infrastructure presentation was followed by explanations from our middle and high school principals mapping out how green building is integrated into our curriculum and how it has united our school. As if this wasn't enough, our presentation closed with 11th grade student, Harold, performing an original rap connecting all the dots - environmental action, education, democracy, community development. The crowd erupted and Harold was a star for a day.

8.2 Virtual Rubbish to Runway

The annual Rubbish to Runway (R2R) was forced by the 2020 global pandemic to revision a live-event fundraiser. The event needed to raise badly needed resources while protecting the health of our communities. Therefore, R2R 2020 was converted into a virtual event. We named it the **R2R 30-Day Resilience Challenge**.

Designers were solicited from past participants, completed their dresses at home, and filmed their own videos. The results were stunning. We had 22 participating designers raising over \$6,000 in contributions during the 30 days.



We fundraised by driving donors from our www.rubbishtorunway.org website to the event page on the Network for Good platform. A series of emails and social media posts created by our marketing staff, Sonia Membreño, also drove traffic to both the R2R website and the event page. Sonia created a series of narratives about the transition of the Hero School during the state-ordered closure. This was an inspiring story and a clear demonstration of resilience.

We scheduled the premiere for Sunday night, July 26th, and 62 people tuned in! The video was beautiful, professional, and fun to watch. Special recognition goes out to Sonia for her ability to translate the Rubbish to Runway committee’s ideas into visual messaging that inspired and motivated our donor base. We will be repeating this event in the virtual space again for 2021. The committee discovered it is easier to plan and uses far fewer material resources.

[Watch the video](#)



Dress by:
Alicia Nang (UK)

8.3 EWB Chirijuyu project started

In September 2019, we launched our seventh water project partnership with Engineers Without Borders - University of Minnesota. **The community of Chirijuyu was identified to be this project’s recipient of a community water delivery system.** Chirijuyu is about a 15-minute drive southwest from Comalapa and does not receive municipal water, drainage, or education services. Currently, families rely on traditional wells as well as bringing in water from the neighboring community when the traditional wells do not naturally refill. This seventh project will benefit the 300 people living in Chirijuyu.

As this project’s data gathering phase fell in the middle of COVID-19 lockdowns, EWB-UoM was not able to travel down to conduct their surveys and site visits. This is where the LWH-EWB partnership has shown its strength. Our Construction Team Leader, Roberto, has been the EWB representative - conducting demographic, topographic, and water surveys on behalf of EWB, for the entirety of 2020. Hero School teachers even joined Roberto on the initial door-to-door demographic survey. Roberto is currently carrying out data collection for EWB in their design phase of the water system. The system will capture water from two sources, pump it up to a holding tank on a hill, treat the water, and gravity feed the water down to individual and multi-household taps.

Roberto Perén
Construction Team Leader
Long Way Home



8.4 GivingTuesday 2020

Fifteen years after the founding of LWH, we are nearing the end of our campus construction projects. For GivingTuesday 2020, the team embarked on a mission to raise funds to begin construction of the **Hero School Science Lab**.

The Science Lab will signify the completion of the original architectural plan that Matt and Adam envisioned for LWH. It will sit right on top of the Teachers' Lounge and next to the Cafeteria, but to build it, it is first necessary to lay the foundation. This means one word: concrete. While we are a green campus, concrete is a necessary material due to its ability to withstand the seismic activity that is so common in the region. Besides, due to its longevity, we consider it to be more respectful to the environment in this instance. Construction will happen in two simultaneous phases (Phase S and Phase B), from January 2021 to April 2021.

Phase S

Creating a roof for the Teachers' Lounge and Water Room.

Phase B

Paving the floor of the Teachers' Lounge (walls already up.)

- The walkway between the Administration building and the Cafeteria will also be paved to facilitate vehicular access and reduce the amount of dust.

Aware of the economic impact that COVID-19 has had around the world, and therefore doubtful of being able to raise the necessary funds for the project, we set our goal at \$10,000. **If there is one lesson 2020 taught us, it is that generosity continues to thrive.** Our community helped us raise the incredible amount of \$12,118.35, which thanks to our GlobalGiving partners who matched \$4,063, became a **mind-blowing total of \$16,181.35**. Not only did we exceed our goal, but we also did it in record time. Our donors truly have a heart of gold, and we are so grateful that they have chosen to be a part of this team.

7.

Highlighting our Supporters



There are many ways to support LWH.

Foundation Supporters

Atlantic Union Bank - PPP
 Omprakash
 Returned Peace Corps Association
 Simon and Louise Henderson Foundation

Our \$500+ Donors

Andrew Gallup	John Hadden
Austin Spinella	Kelli Nielsen
Dandy Lee	Kent Taylor
Diane Boles	Laurence Hausman
Heidi Spinella	Matt Boisen
James Donovan	Margaret R. Burks

Our Recurring Donors

Aaron Colvin	Julia Burke
Aaron Miller	Kerry Norris
Alana Carmel	Kimon Ivanov
Andrew Gallup	Lars Battle
Austin Spinella	Lawrence Reichard
Ben Smith	Linda Johnson
Bert Eke	Matt Boisen
Daniel Dumovich	Nate Deines
Deborah Winston	Noemi Cana
Donna Worosila	Paul McCluskey
Elizabeth Rose	Renee M. Harms
Evan Johnson	Rico Kimbrough
Gregory Paneitz	Robert Merwin
Heidi Spinella	Ryan Beyer
Janet Ard Paneitz	Sandra Lepore
Jamie Owens	Sharon O'Connor B.
Jean Hamburg	Taylor McKenney
Johanna Poston	Todd Adams
John Hadden	Wes Anderson

9.2 Thank you to our Board of Directors

We don't even want to imagine what 2020 would have been like for Long Way Home without the incomparable members of our Board of Directors. Although the pandemic brought with it many economic, social, family and personal challenges for all of us, each of them demonstrated an unwavering commitment to the organization. In such difficult times, it was an honor to have benefited from their experience, leadership, compassion and generosity. Alex, Elizabeth, Jeremy, Heidi, Casey, Kurt, Lauren, Jim, Honey, and Yessenia, we want to thank you for all that you are and for doing all that you do. **You have given us a lot of strength.**



Alex



Elizabeth



Jeremy



Heidi



Casey



Kurt



Lauren



Jim



Honey



Yessenia

“The greatest characters the world have ever known, have rose on the democratic floor.”

-Thomas Paine

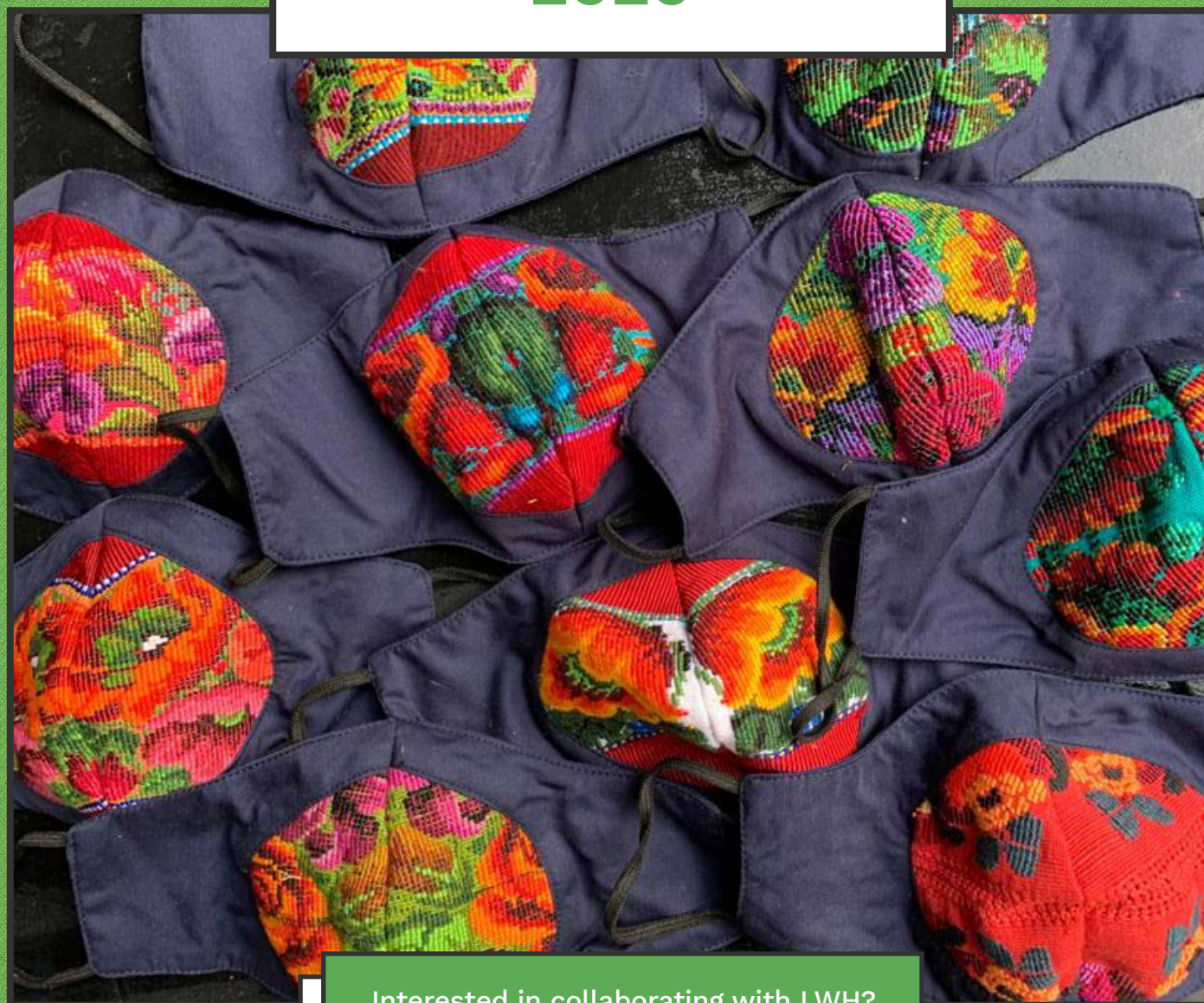
“Rights of Man”



Hugo Chex, green builder and instructor, during the Green Building Academy. March, 2020.

8.

Lessons from 2020



Interested in collaborating with LWH?

Ay

Harold's performance at the Conference in Antigua was a stark reminder of the talent at our school and what can be lost if such students don't get the chance to shine. (Check out this section if you missed our shout out to Harold).

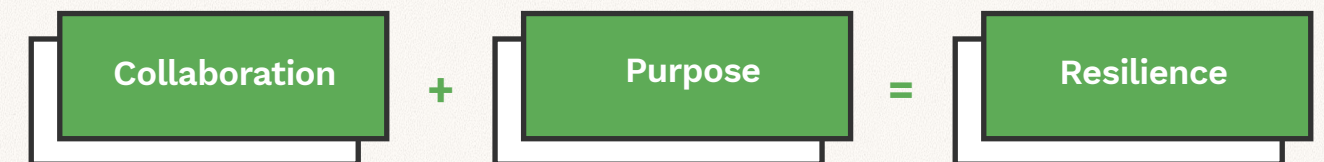
Bee

While at the Green School Conference, we were reminded of the importance of networking. And because of the conference, LWH developed a couple of strategic partnerships. Stay tuned in 2021 for more information on upcoming progressive education collaborations.

Cee

Remain flexible. Be ready to adapt to new environments and circumstances. Prepare. And most importantly, communicate.

To sum up the power of LWH and the Hero School model in 2020:



9.

Looking forward to 2021

2021 is the year of tentative plans. Until officially informed otherwise, our first priority is the safety and security of our entire team. Everything else comes second. Until COVID no longer looms as a threat we will work on the refinement of our ongoing operations. Refinement goals include generating organization-wide monthly financial reports, assembling committees to tackle the tough issues, improving overall communication, and updating policies and procedures.

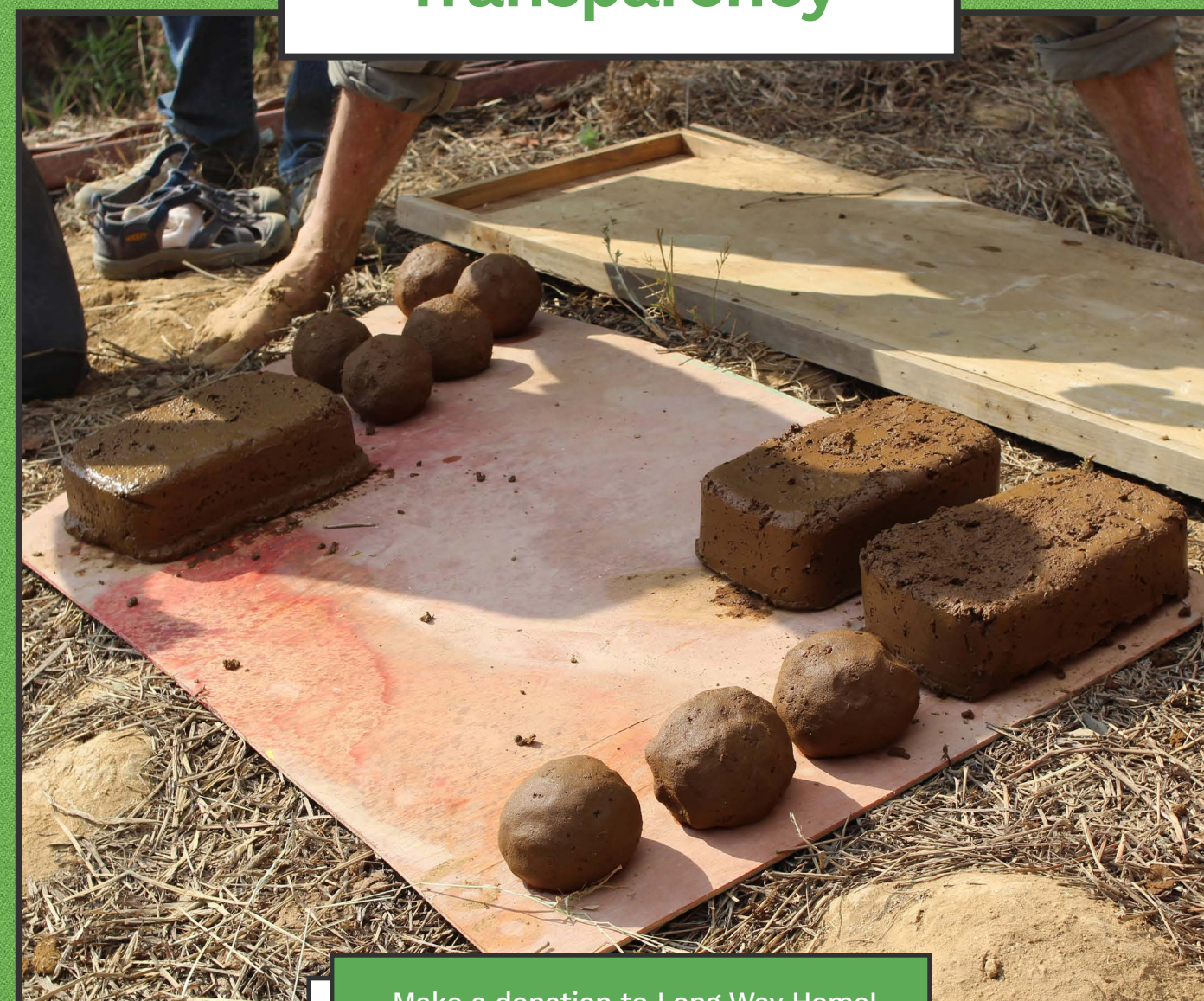
As we refine administratively, we expect all of the programmatic curve balls that accompany another school year in which our teachers visit their students at home. 2020 showed us that we are beyond capable, when working as a team, to respond to these curveballs. In 2021 we will be ready again, with collaboration and purpose, to embody resilience. ¡Hacia la Victoria!... See you on Zoom!

-Matt



10.

Financial Transparency



[Make a donation to Long Way Home!](#)

10.1 Statement of Activities

JANUARY 1, 2020 - DECEMBER 31, 2020

REVENUE

Contributed Revenue

Individual Donations	\$75,542.01
Corporate Donations	\$1,535.64
Grants	\$45,220
Awards	\$-
InKind	\$11.68

Net Contributed Revenue \$122,309.3

Earned Revenue

Fees for Educational Products	\$1,475
Fees for Experience Programs	\$46,953.62
Fees for Other Products	\$20,407.03
Construction Projects	\$10,750.00

Net Earned Revenue \$79,585.65

Total Income \$201,894.98

EXPENSES

Program Services	\$157,885.63
Operations	\$56,474.25
Fundraising	\$3,597.00
Across Multiple Functions	\$4,023.62

Total Expenses \$221,980.50

NET PROFIT / (LOSS)*

(\$20,085.52)

*LWH received an EIDL loan through the SBA in September, which carried us through this 2020 net loss.

10.2 Income Sources

Tuition	\$996.06
Special Events	\$16,853.00
Service Groups	\$34,974.00
Other	\$34,062.15
Merchandise	\$942.22
Internships	\$-
InKind	\$12.00
Individual Volunteers	\$1,565.00
Individual Donors	\$49,347.85
GB Manual	\$74.06
GB Academy	\$1,200.00
Grants	\$45,220.00
Education Model	\$1,475.00
Corporate Donors	\$1,535.64
Construction Projects	\$13,650

GRAND TOTAL \$201,906.98

10.3 Expenses

Program Services	\$157,885.63
Operations	\$56,474.25
Fundraising	\$3,597.00
Across Multiple Functions	\$4,023.62

GRAND TOTAL \$221,980.50

10.4 Departmental Expenses

Volunteer Program	\$ 2,218.89
Outreach	\$ 6,922.86
Education	\$ 79,530.47
Construction	\$ 54,111.25
Community Develop.	\$ 918.66
Across Multiple Departments	\$ 78,278.37

GRAND TOTAL \$221,980.50

10.5 Expenses by Type

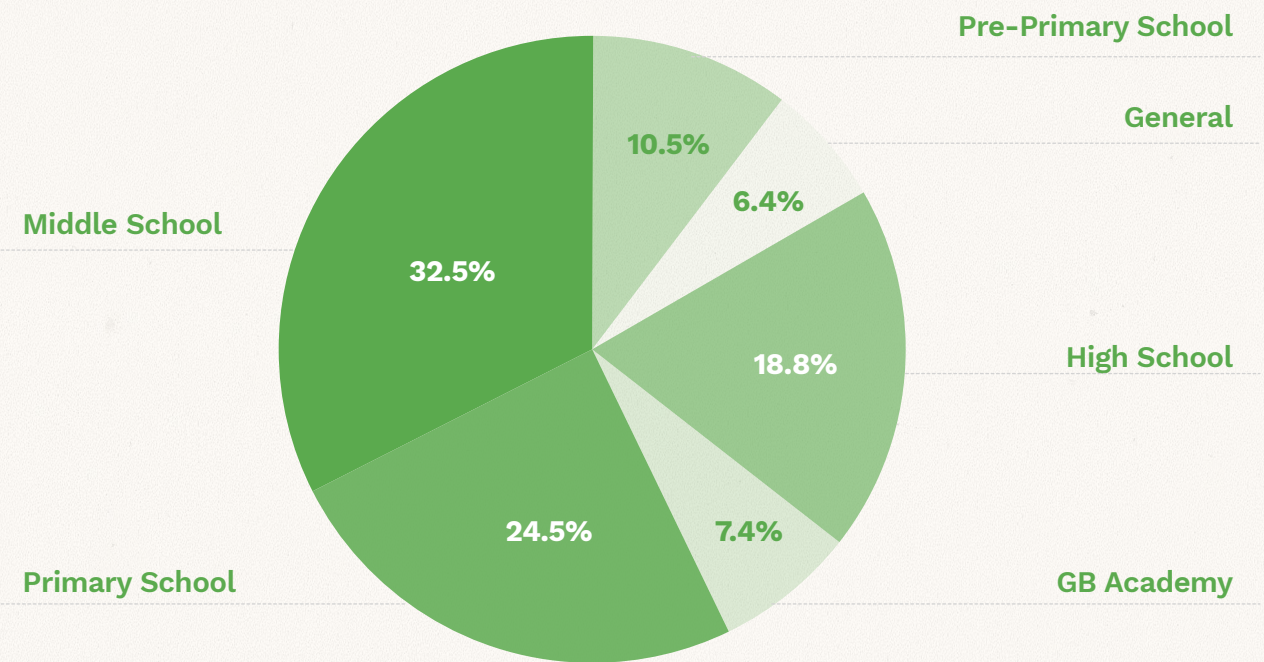
Staff Salaries & Wages	\$136,733.21
Programs and Services	\$29,191.06
Contract Services	\$15,988.35
Services For Volunteers	\$6,930.10
General	\$14,948.91
Facility & Equipment	\$7,758.50
Travel & Meetings	\$3,080.34
Fundraising	\$3,597.00
Other Costs	\$3,178.82
Business Expenses/Taxes	\$100.00
Payment Processing Fees	\$474.21

GRAND TOTAL \$221,980.50

10.6 Costs between Education Sub-Departments

Education Sub-Departments

Student Projects*	\$-
Pre-Primary School	\$8,322.93
General	\$5,059.69
High School	\$14,931.81
GB Academy	\$5,891.38
Primary School	\$19,473.66
Middle School	\$25,851.00



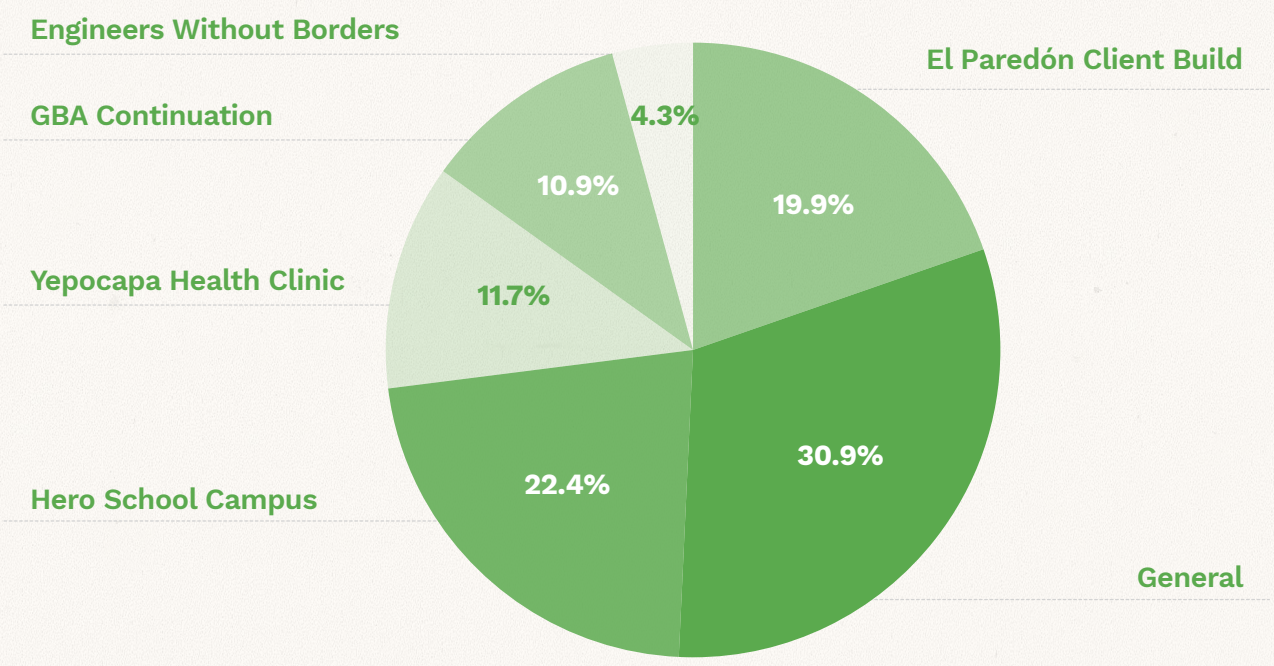
*No Hero School Student Projects were executed due to the COVID-19 pandemic.

GRAND TOTAL \$79,530.00

10.7 Costs between Construction Sub-Departments

Construction Sub-Departments

El Paredón Client Build	\$10,756.12
General	\$16,702.40
Hero School Campus	\$12,128.09
Yepocapa Health Clinic	\$6,324.09
GBA Continuation	\$5,891.38
Engineers Without Borders	\$2,309.17



GRAND TOTAL \$54,111.25

10.8 Services for Volunteers

Culture/Excursion	\$123.72
Miscellaneous	\$185.06
Transportation	\$64.70
Lodging	\$1,357.20
Food & Supplies	\$488.21

**In 2020, Long Way Home hosted volunteers from January 1st to March 16th. The Volunteer Program was suspended due to the COVID-19 pandemic.*

GRAND TOTAL \$2,218.89

Our Pledge

We pledge to keep administrative costs low so that more of your money goes directly into education, construction materials, and local salaries. With your help, we are closer to realizing our vision: **communities equipped to innovate and act responsibly in the face of local and global challenges.**

We are grateful for your confidence and support. Thank you!



Check out our 2019 Annual Report.



www.lwhome.org

San Juan Comalapa, Chimaltenango, Guatemala.

Long Way Home is a registered 501(c)3
in the United States of America.